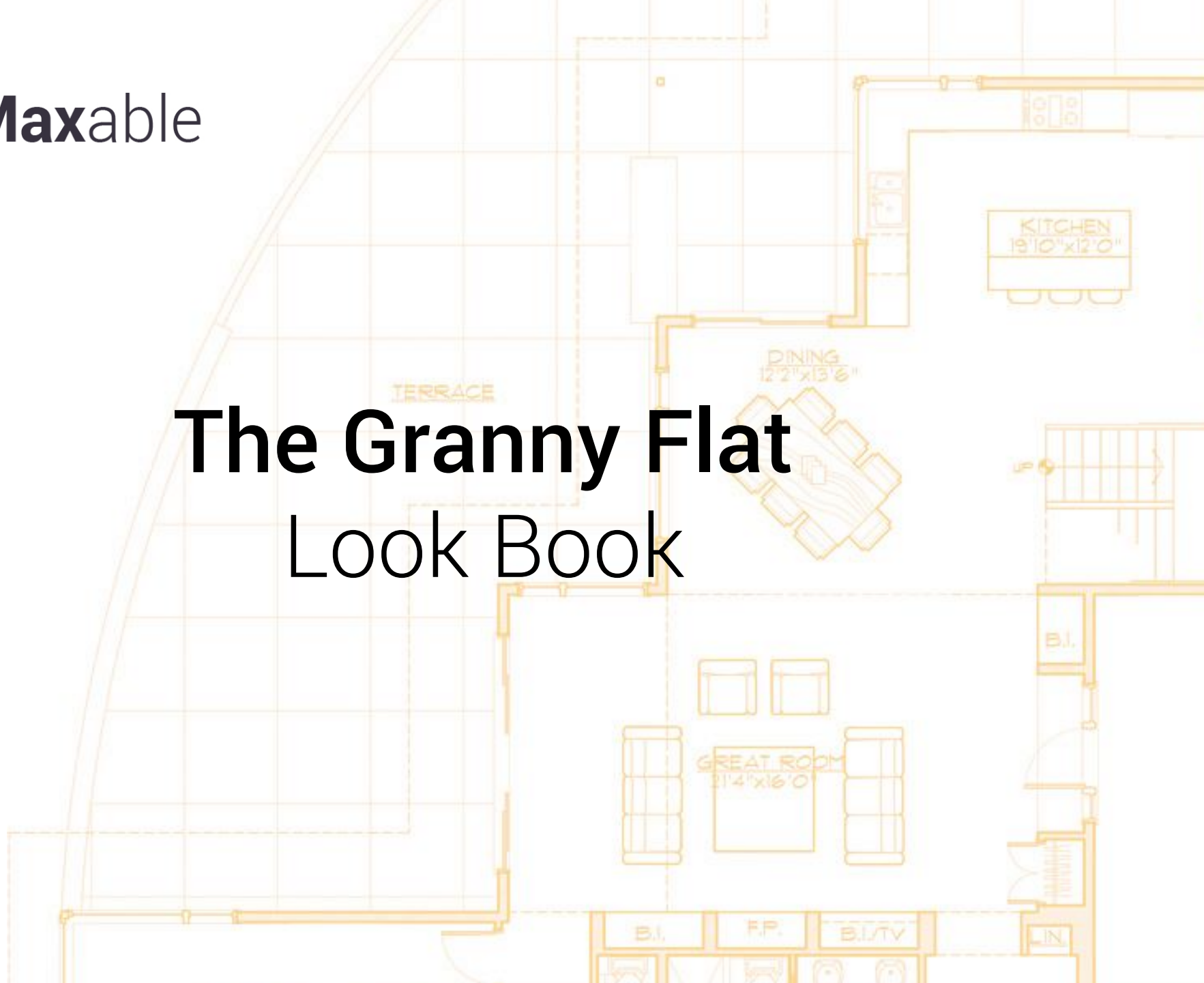




Maxable

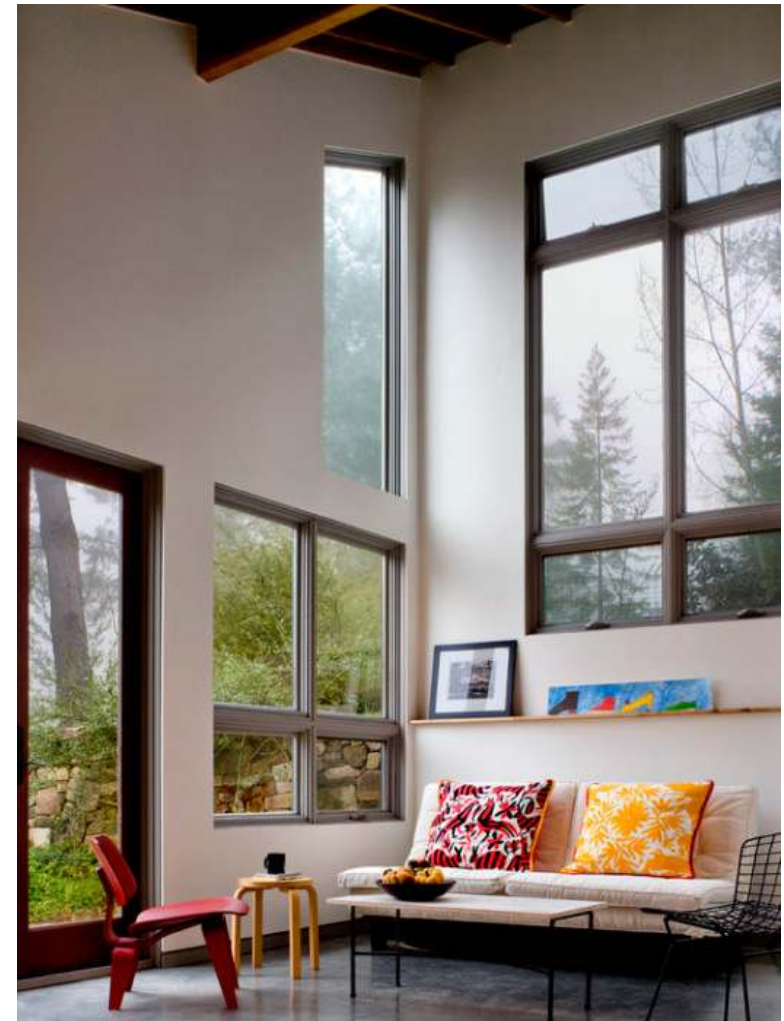
The Granny Flat Look Book



Visit MaxableSpace.com



My practice is strongly influenced by the practice of Joe Esherick, with whom I worked for many years. For me, his often-quoted "How would a farmer do it?" means designing buildings that make sense on their sites, whose practical approach to materials and construction details ensures that they will last and whose design has a straightforward, simple beauty.



CATHY SCHWABE
ARCHITECTURE



Designed for a photographer and a writer as a multi-purpose space for painting, drawing, writing, photography, creative dreaming, holiday meals, small workshops, and overflow guests, this 864 SF building with porch and terraced extensions frames the top of the hill above a small existing dwelling.

CATHY SCHWABE
ARCHITECTURE



This home housed a family of 4 for 4 years. It's 540 sq ft.



When Jessica and Yianni bought the property they decided to remodel it without adding to the existing footprint. Their first step was to redesign the interior for maximum space efficiency. A 'great room' houses the kitchen, dining room and living room with large, comfortable, built in sofas that double as twin beds for guests. The ceiling was opened up in the main space, but the bathroom and bedroom have lower ceilings to accommodate the parent's sleeping loft above, accessible by a walnut ladder.

J E S S I C A H E L G E R S O N

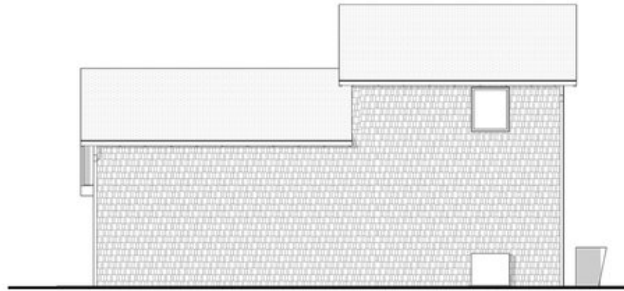
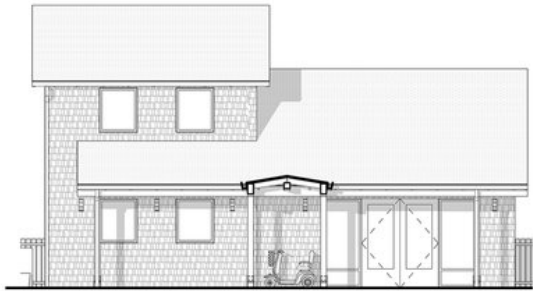
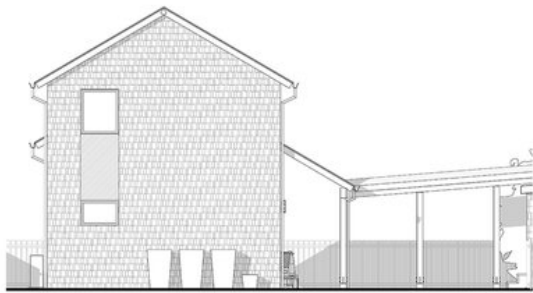


We aimed to create a contemporary Northwest Modern aesthetic that draws from a more traditional house form. We took two simple gable roof volumes and intersected them, while lifting one above the other. This created a covered carport under the second floor, while allowing for vaulted ceilings over the main living spaces and within the master bedroom suite.

We preserved an open plan for the living spaces on the ground floor, while creating a strong connection to the outdoors through a large glass window wall. There are 3 bedrooms and 2 bathrooms on the second level with a bonus guest room/office and full bath on the ground level.



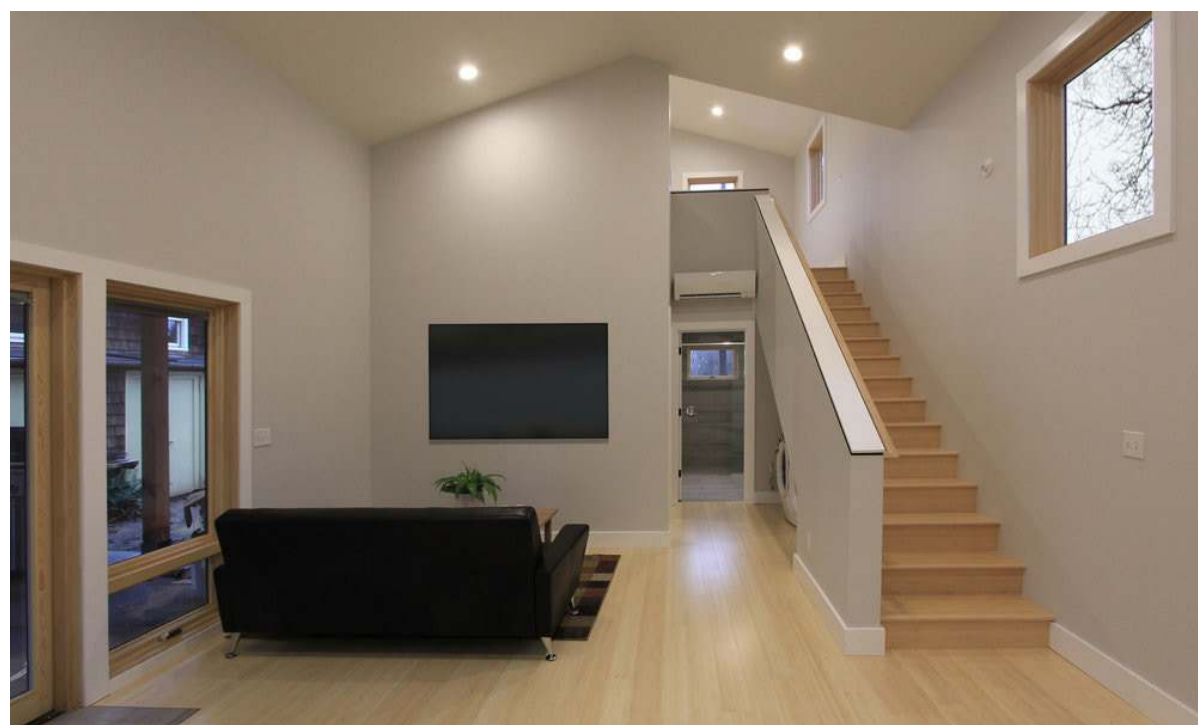




This new construction, 2 bedroom accessory dwelling unit is located in Portland's Woodstock Neighborhood. The ADU is attached to an existing traditional farmhouse via a covered breezeway. The design represents the traditional regional farm vernacular including cedar siding, shingle roofing, and shed forms.

Passive solar design principles are incorporated to obtain maximum winter heat gain and summer cooling. A deep soffit overhangs the facade, shading the windows and French entry doors from high angled summer sun, reducing heat gain in the summer months. Operable windows allow for cross ventilation.





The ADU also a high efficiency building envelope, FSC certified wood products, an energy efficient mini-split mechanical system, high efficiency LED lighting, occupancy controlled ventilation, and low or zero VOC/ Formaldehyde products selected throughout. The open Living/Dining/Kitchen "great room" faces west with a window wall and full glass french doors overlooking the patio and garden. The slab on grade construction offers barrier free ADA accessibility throughout the unit.



This two-story 1000-square-foot ADU (Accessory Dwelling Unit) takes advantage of the existing home's generous backyard to provide an urban infill opportunity for the property owners. Vaulted ceilings expand the interior and make the spaces feel much larger, polished concrete floors provide durability and shine, skylights brighten several spaces, and three patios offer an abundance of outdoor living.









Heart of the House:
Kitchen Ideas



BEER FOR JOY

Grocery list

- Apples
- Eggs
- Milk
- Bread
- Butter
- Olive Oil

please buy more carrots!

I hate spam! SPAMME ANY!

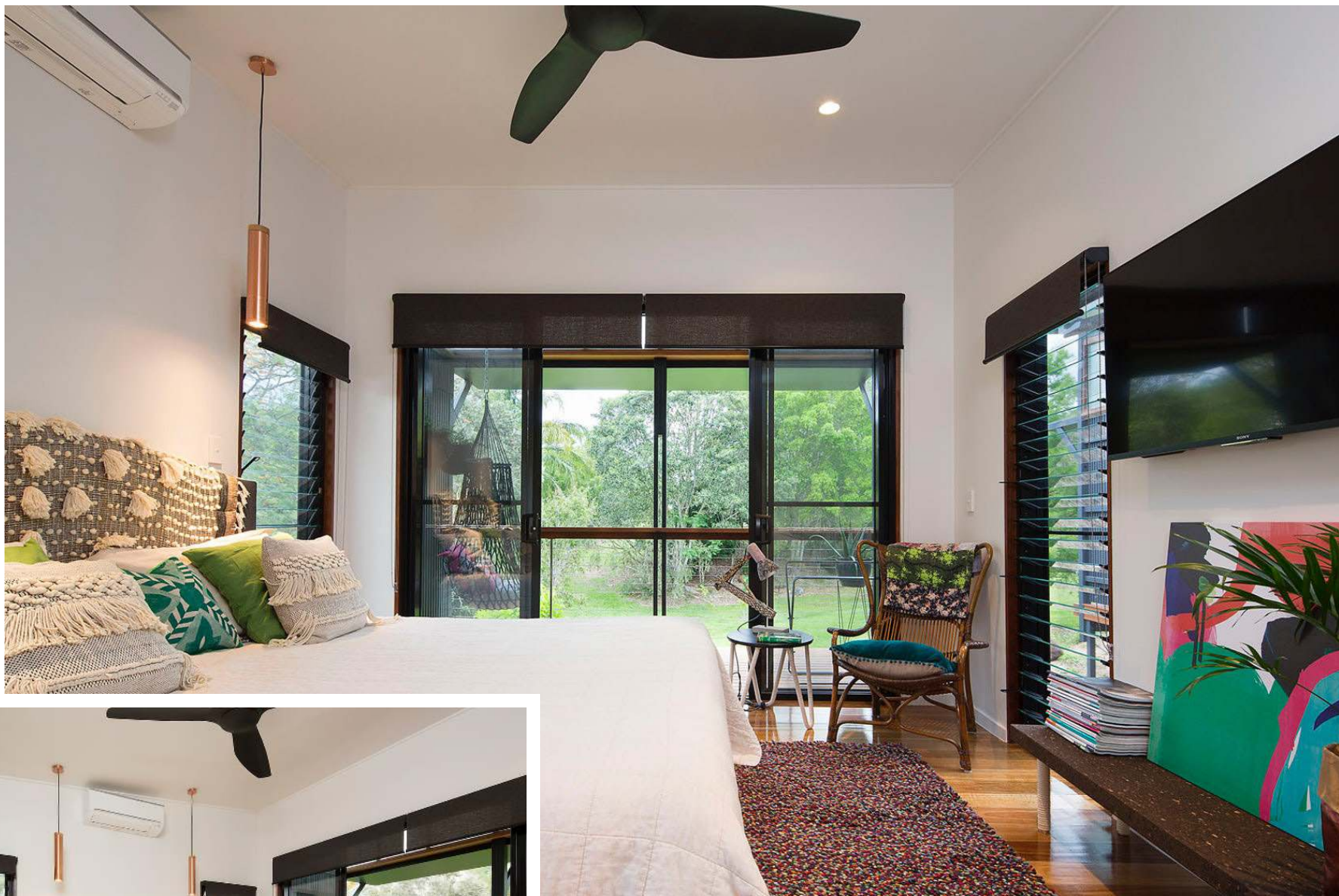
don't forget to buy more of THESE →

BAR OPENS here

Wine BOTTLED POETRY

Creating Bedroom Tranquility





Funky Living Room Ideas







Maxable

Not sure where to start? Maxable offers project strategy & guidance. Get answers to your questions like:

Can I build a granny flat?

What are the regulations?

Is this a savvy financial decision for my family?

What are my financing options?

How much will this cost?

For more ideas and information on all things granny flats
visit ***MaxableSpace.com***